

# Riverfront Project

Presented to  
Office of the W V U Interim President  
December 12, 2008

Julie Kagler, Daniel Proudfoot, Madeleine Hoden  
In fulfillment of RPTR 365

# Project Goals

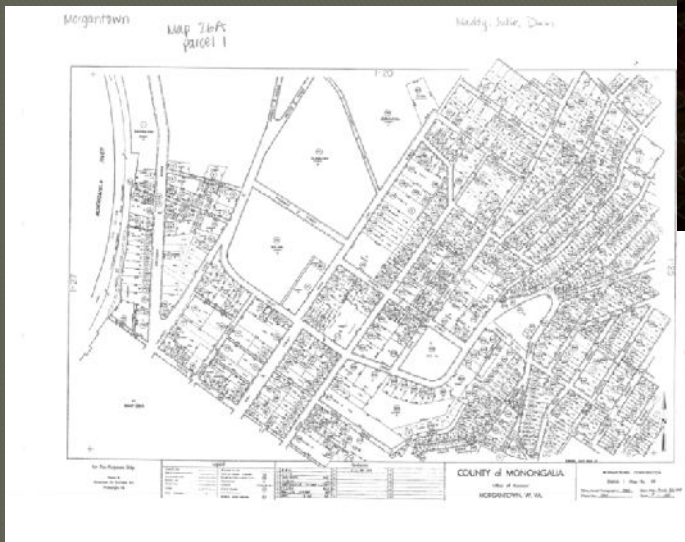
---

- 1. Improve aesthetics in the Point Marion Pool
- 2. Improve recreational access
- 3. Improve fish habitat and other ecological functions and services in the Point Marion Pool

# Site Location: Morgantown

Morgantown Map 26A  
Parcel 1

Morgantown Side  
-Picturesque from  
Westover  
-Could become part of  
River Taxi Services



# Site Location: Westover

Westover Map 6  
Parcel 62

Westover side

-Could also become part  
of River Taxi Route

-Could increase popularity  
of Westover  
(commercially and  
residentially) and increase  
land value

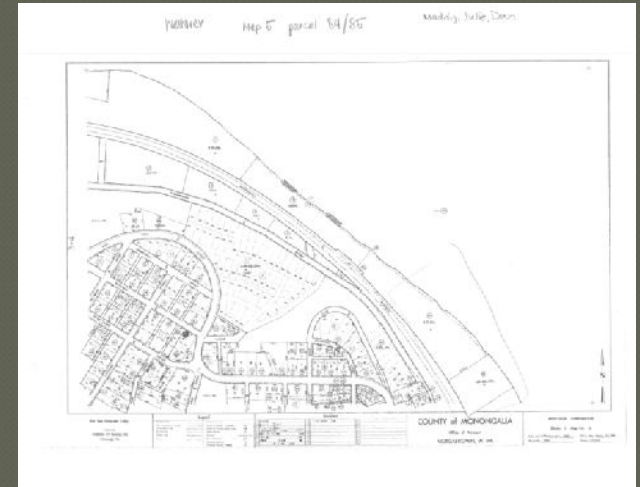
-A llow first opportunity to  
access River on Westover  
side



# Westover Map 5, Parcel 85



Currently rented by  
University



A esthetically enhance  
area !

Show case U niversity 's  
architectural beauty



# Hand Drawn Map

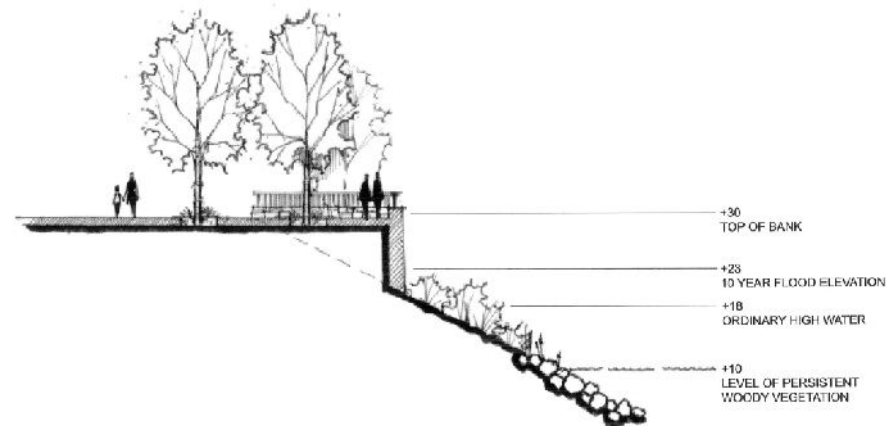


Madeleine Haden, Dan Proudfoot, Julie Kagler

# Potential Shoreline for Stansbury side

Could either implement this type of shoreline, or dock.

See next slide.



NOTE N.12

Overlook Options:  
Retaining Wall  
Section

UPPER  
U.6

# Dock for Either side

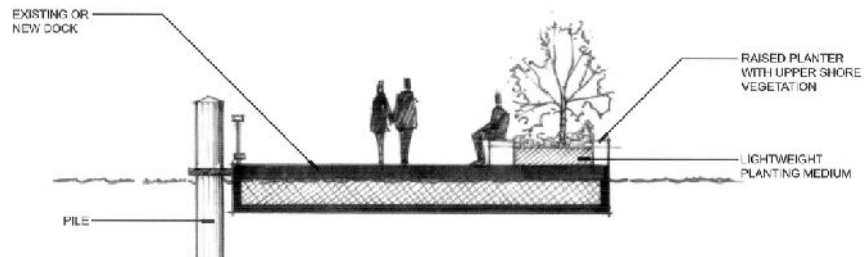
For Both sides:

May become a nice boardwalk and area to congregate prior to boarding ferry

Potential anchors already exist from Gulf Station (Westover)

On Westover side:

Open on water, with access to best view of Morgantown!



NOTE N.8

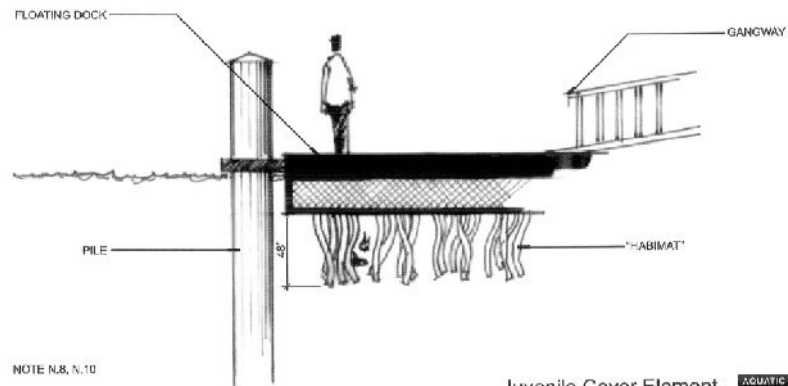
Planted Walkway  
or Dock  
Section

AQUATIC  
A.6



# Dock for Either side

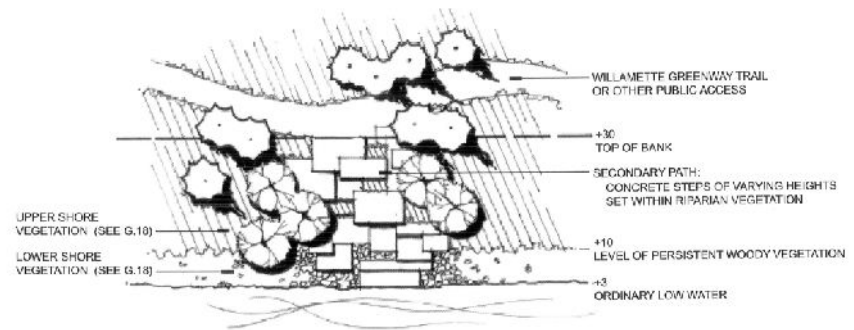
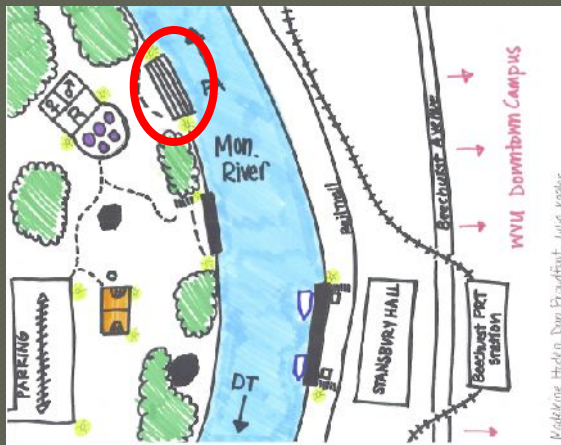
Opportunity to enhance previous dock idea



Juvenile Cover Element  
Section

AQUATIC  
A.4

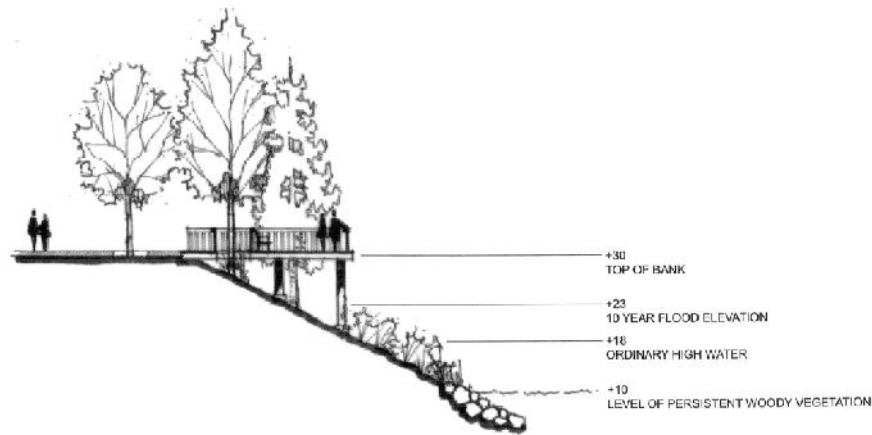
# Multi-level Cement Steps (Westover)



Access Option B  
Plan

GENERAL  
G.2

# Potential Shoreline for Westover



NOTE N.12

Overlook Options:

Pile Supported

Section

UPPER  
U.5

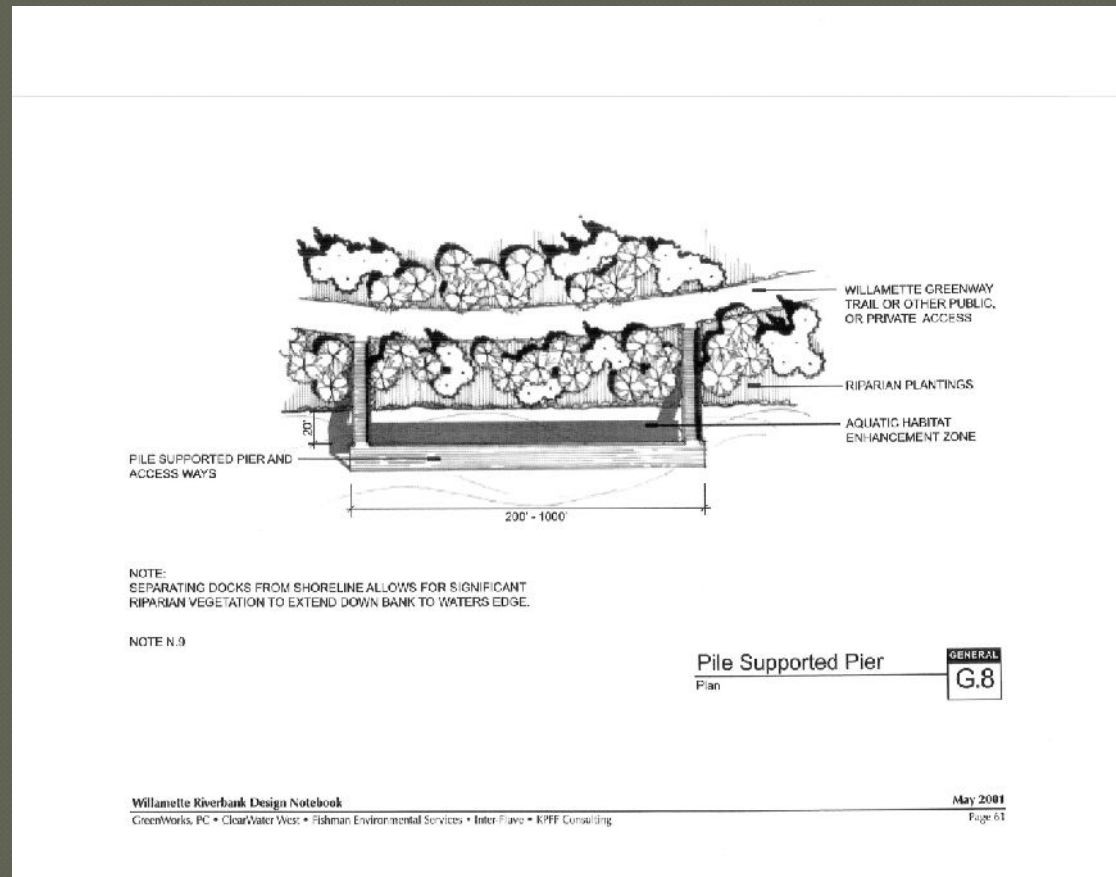
Protect vegetation already thriving and avoid disrupting fish and animal habitat

# Potential Shoreline for Either side

Reduces environmental damage/change with outstretched access.

Side facing shore could become fish habitat and therefore interest fishermen to area

A D A accessible

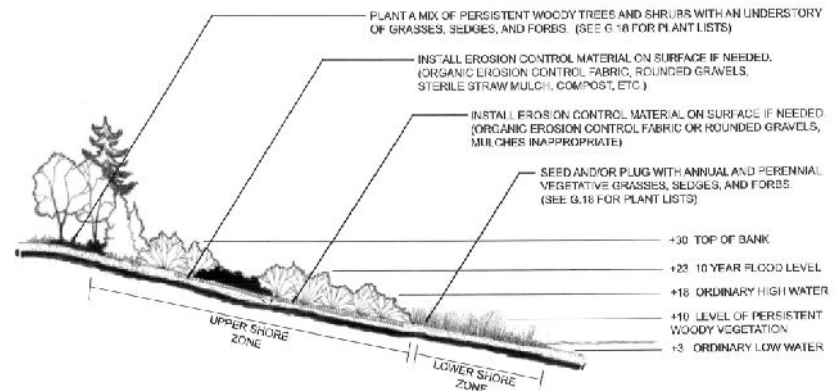


# Shoreline of Westover

- In area with no dock, boardwalk, or steps we could try implementing little access to shoreline.
- Protect erosion and shoreline by use of vegetation.



Madeleine Hosler, Don Proudfoot, Jane Kasler



Vegetated Slope  
5:1 or Less Steep  
Section

GENERAL  
G.11

# Challenges...



Location in relation to train tracks

Negative? Or Positive?

Resolution: barrier

(trees, small hill, fence, etc.)



Transparent, cement and natural sound barriers

# Conclusion

---

- 1. Improve aesthetics in the Point Marion Pool
  - By changing area from a building to a park
- 2. Improve recreational access
  - Provide new park and green space in downtown Morgantown
- 3. Improve fish habitat and other ecological functions and services
  - Use of woody debris, vegetation, structures and synthetic fish habitat

# References

---

- W illam ette Riverbank D esign N otebook
  - [http://www.pdc.us/pdf/dev\\_serv/pubs/willamette\\_riverbank\\_design\\_noteb](http://www.pdc.us/pdf/dev_serv/pubs/willamette_riverbank_design_noteb)
- D ahl, Bernie and M olnar, Donald J. A natomy of a Park (3<sup>rd</sup> Ed.)
- Jernejcic, Frank W V Division of Natural Resources
- Pierskalla, Chad W V U Division of Forestry and Natural Resources.
- W illiam W hyte and Frederick OImstead
- M ap Room of <http://www.assessor.org/>



Thank You!  
Questions?

---

