

Riverfront Project

Presented to
Office of the W V U Interim President
December 12, 2008

Julie Kagler, Daniel Proudfoot, Madeleine Hoden
In fulfillment of RPTR 365

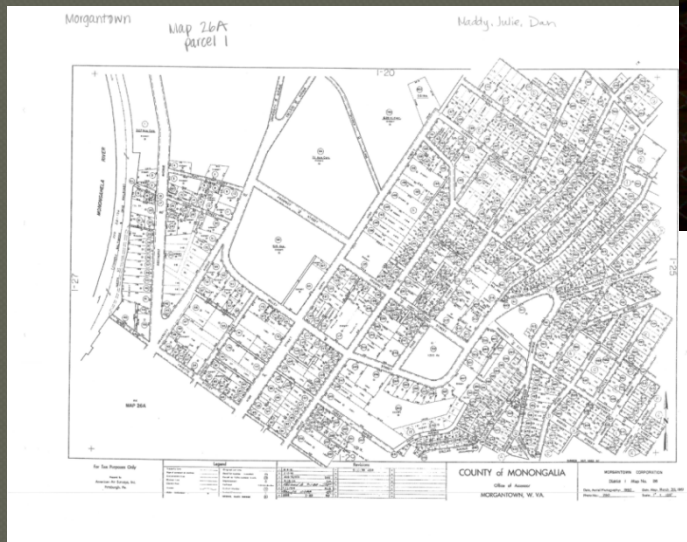
Project Goals

- 1. Improve aesthetics in the Point Marion Pool
- 2. Improve recreational access
- 3. Improve fish habitat and other ecological functions and services in the Point Marion Pool

Site Location: Morgantown

Morgantown Map 26A
Parcel 1

Morgantown Side
-Picturesque from
Westover
-Could become part of
River Taxi Services



Site Location: Westover

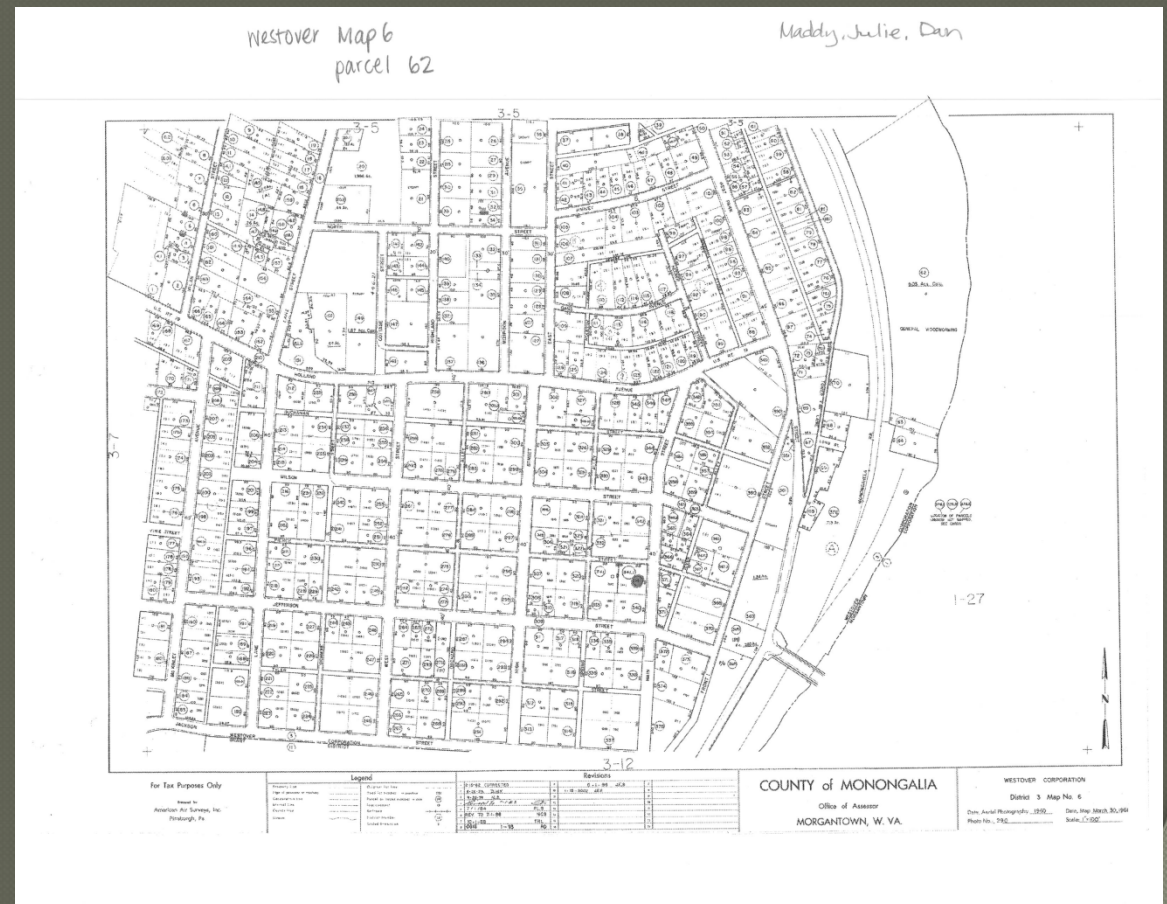
Westover Map 6
Parcel 62

Westover side

-Could also become part
of River Taxi Route

-Could increase popularity
of Westover
(commercially and
residentially) and increase
land value

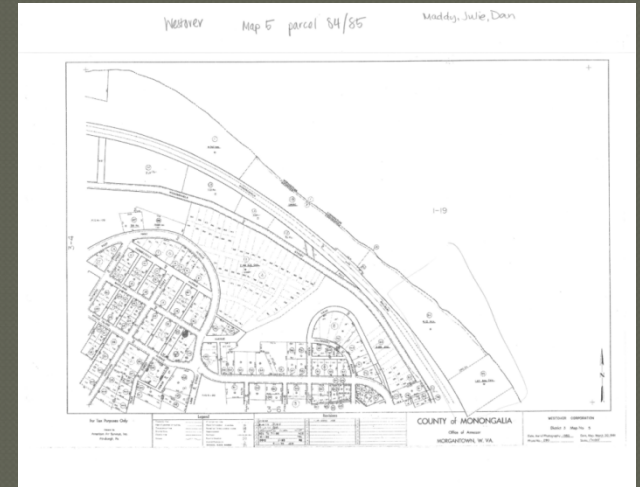
-A low first opportunity to
access River on Westover
side



Westover Map 5, Parcel 85



Currently rented by
University

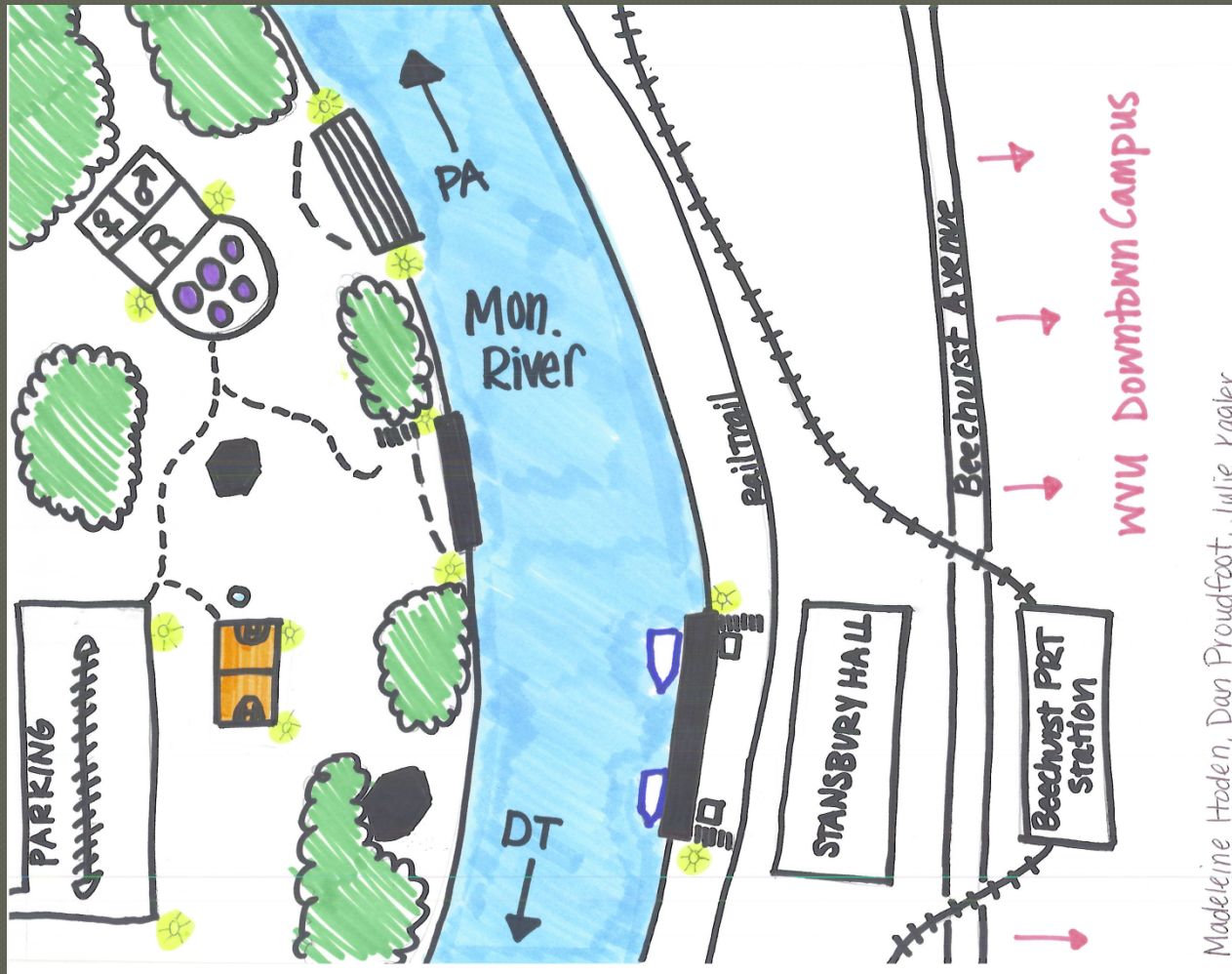


A esthetically enhance
area !

Show case U niversity 's
architectural beauty



Hand Drawn Map



Madeleine Hoden, Dan Proudfoot, Julie Kagler

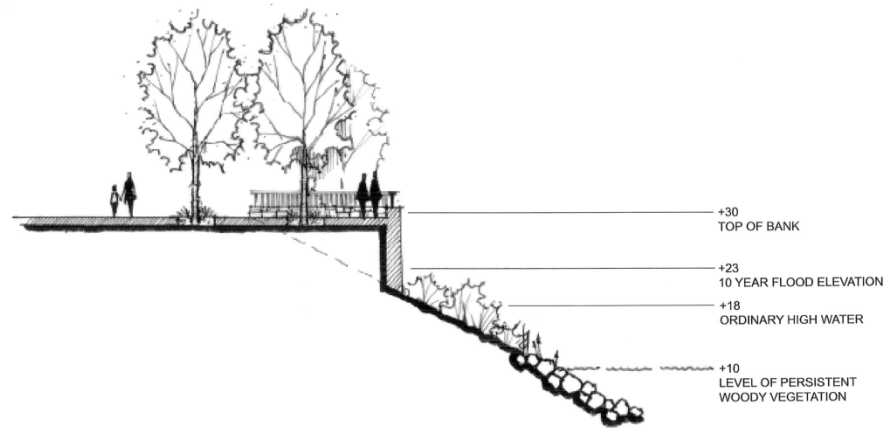
Potential Shoreline for Stansbury side

Could either implement this type of shoreline, or dock.

See next slide.



Maddie Harkin, Don Pfendfer, Julia Isler



NOTE N.12

Overlook Options:
Retaining Wall
Section

UPPER
U.6

Dock for Either side

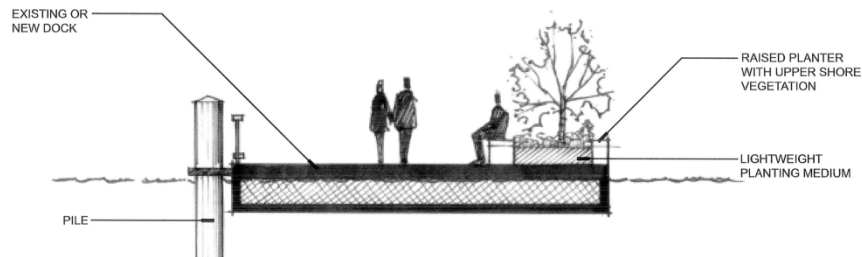
For Both sides:

May become a nice boardwalk and area to congregate prior to boarding ferry

Potential anchors already exist from Gulf Station (Westover)

On Westover side:

Open on water, with access to best view of Morgantown!



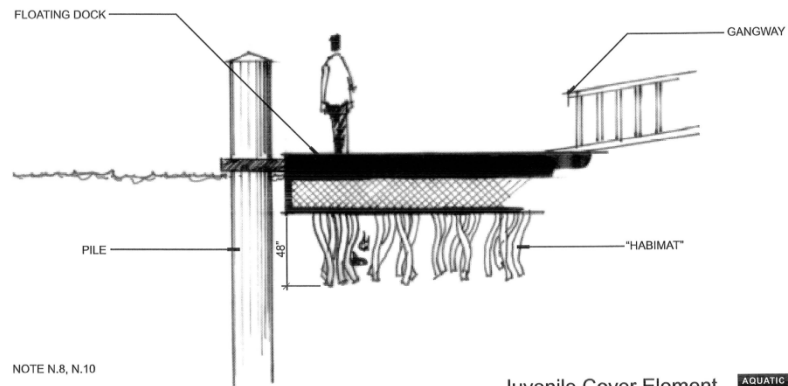
NOTE N.8

Planted Walkway
or Dock
Section

AQUATIC
A.6

Dock for Either side

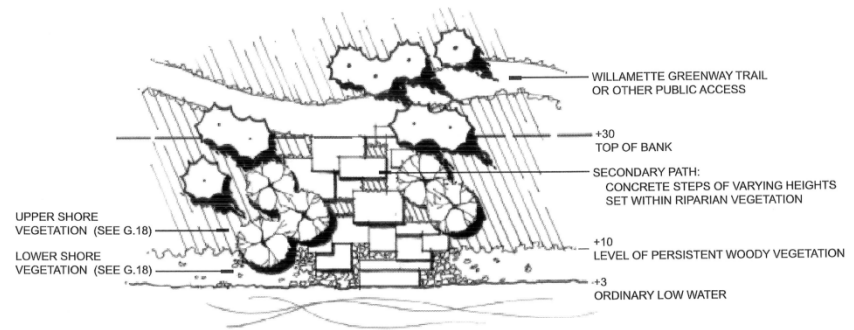
Opportunity to enhance previous dock idea



Juvenile Cover Element
Section

AQUATIC
A.4

Multi-level Cement Steps (Westover)



Access Option B
Plan

GENERAL
G.2

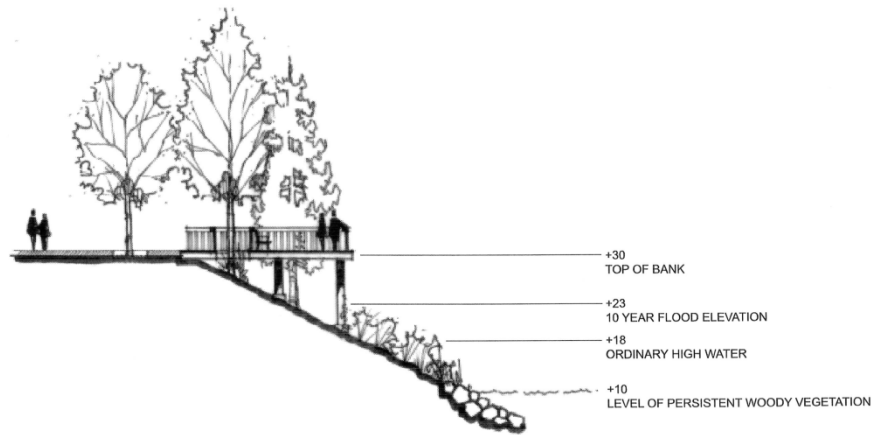
Willamette Riverbank Design Notebook

GreenWorks, PC • ClearWater West • Fishman Environmental Services • Inter-Fluve • KPFF Consulting

May 2001

Page 54

Potential Shoreline for Westover



NOTE N.12

Overlook Options:
Pile Supported
Section

UPPER
U.5

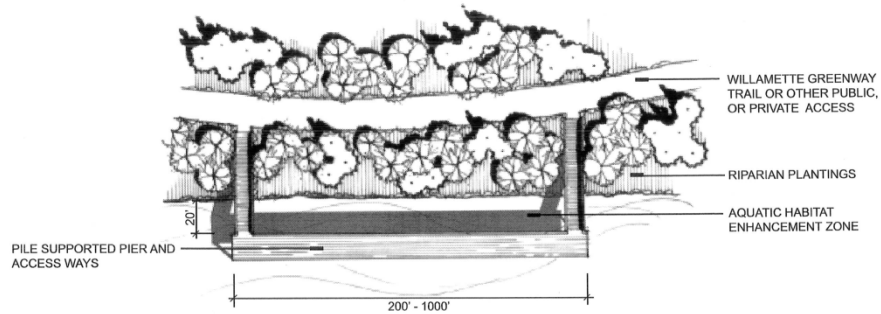
Protect vegetation already thriving and avoid disrupting fish and animal habitat

Potential Shoreline for Either side

Reduces environmental damage/change with outstretched access.

Side facing shore could become fish habitat and therefore interest fishermen to area

A D A accessible



NOTE:
SEPARATING DOCKS FROM SHORELINE ALLOWS FOR SIGNIFICANT
RIPARIAN VEGETATION TO EXTEND DOWN BANK TO WATERS EDGE.

NOTE N.9

Pile Supported Pier
Plan

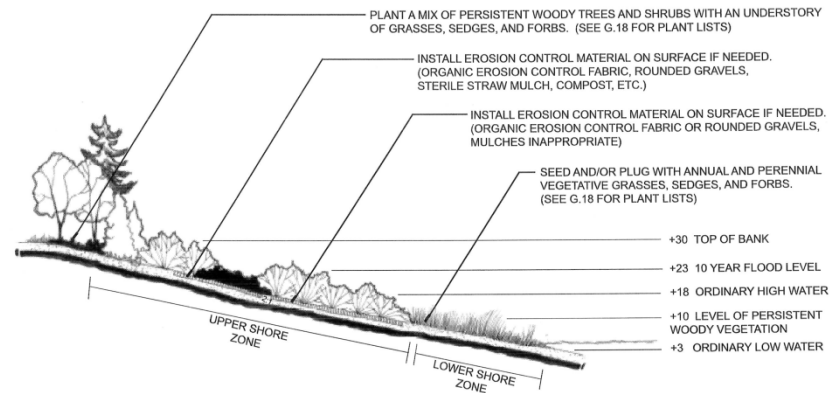
GENERAL
G.8

Shoreline of Westover

- In area with no dock, boardwalk, or steps we could try implementing little access to shoreline.
- Protect erosion and shoreline by use of vegetation.



Modeling: Haskin, Dan Proudfoot, Julie Kozler



Vegetated Slope
5:1 or Less Steep
Section

GENERAL
G.11

Challenges...



Location in relation to train tracks

Negative? Or Positive?

Resolution: barrier

(trees, small hill, fence, etc.)



Transparent, cement and natural sound barriers

Conclusion

- 1. Improve aesthetics in the Point Marion Pool
 - By changing area from a building to a park
- 2. Improve recreational access
 - Provide new park and green space in downtown Morgantown
- 3. Improve fish habitat and other ecological functions and services
 - Use of woody debris, vegetation, structures and synthetic fish habitat

References

- W illam ette Riverbank D esign N otebook
 - http://www.pdc.us/pdf/dev_serv/pubs/willamette_riverbank_design_noteb
- D ahl, Bernie and M olnar, Donald J. A natomy of a Park (3rd Ed.)
- J ernejcic, Frank W V D ivision of N atural Resources
- P ierskalla, Chad W V U D ivision of Forestry and N atural Resources.
- W illiam W hyte and F rederick O lmstead
- M ap Room of <http://www.assessor.org/>

Thank You!
Questions?

